

TOILET CLEANING CARD

MURASAKI CLEANING METHOD

Support Information

Product(s) Required:

Refill



Toilet Cleaner
*Blue spray bottle



Wet Wipe
(Flushable)

Top Tips:

Try to work from cleanest to dirtiest spot to minimize the amount of wet wipes needed.
The use of stronger chemicals is recommended in case the flooring is really dirty.

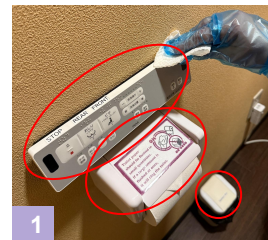
Equipment Required:



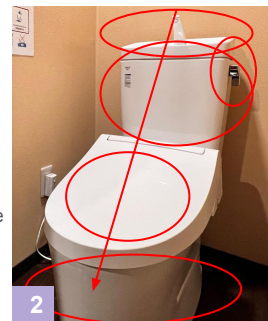
Toilet Brush Gloves Mop

How to clean the toilet

- 1 Use Wet Wipe to clean the **control panel**, toilet paper **holder** and **trash bin**.
- 2 Use Wet Wipe to clean the **outer side of the toilet**, top to bottom.
- 3 Use Toilet Cleaner + Toilet Brush to clean **toilet**. Soak Toilet Cleaner for a **few minutes**. Please empty out the water in the **toilet brush holder**.
- 4 Use Wet Wipe to clean the **toilet seat**, the **bottom of the lid**, **under the seat**, and **rim**.
- 5 Use Wet Wipe to clean the **door knob**.
- 6 Use Wet Wipe to clean the **slippers inside & outside**.
- 7 Use Wet Wipes + Mop to mop the **floor**. Vacuum first if needed.
- 8 Take out the **trash bag** and refill the **toilet rolls**, 1 in holder + 2 on the shelf.
- 9 **Fold** the toilet paper to mark the toilet cleaned.

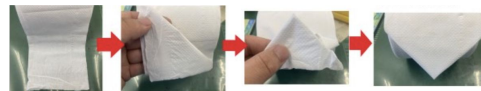


1



2

1.Fold back the corner to make a triangle 2.Fold it back into a triangle



3



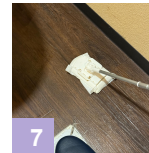
4



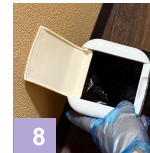
5



6



7



8



9